



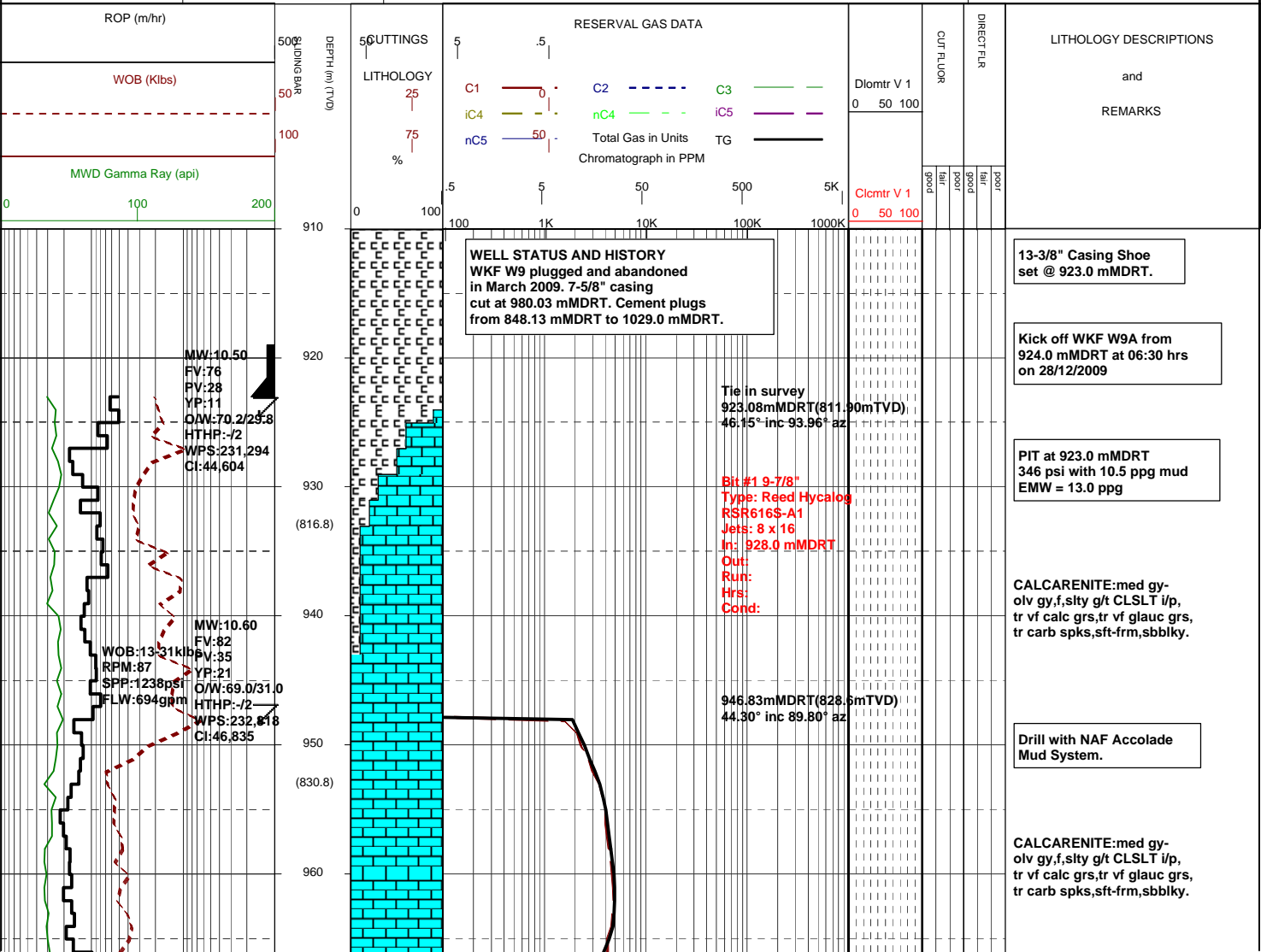
MASTERLOG

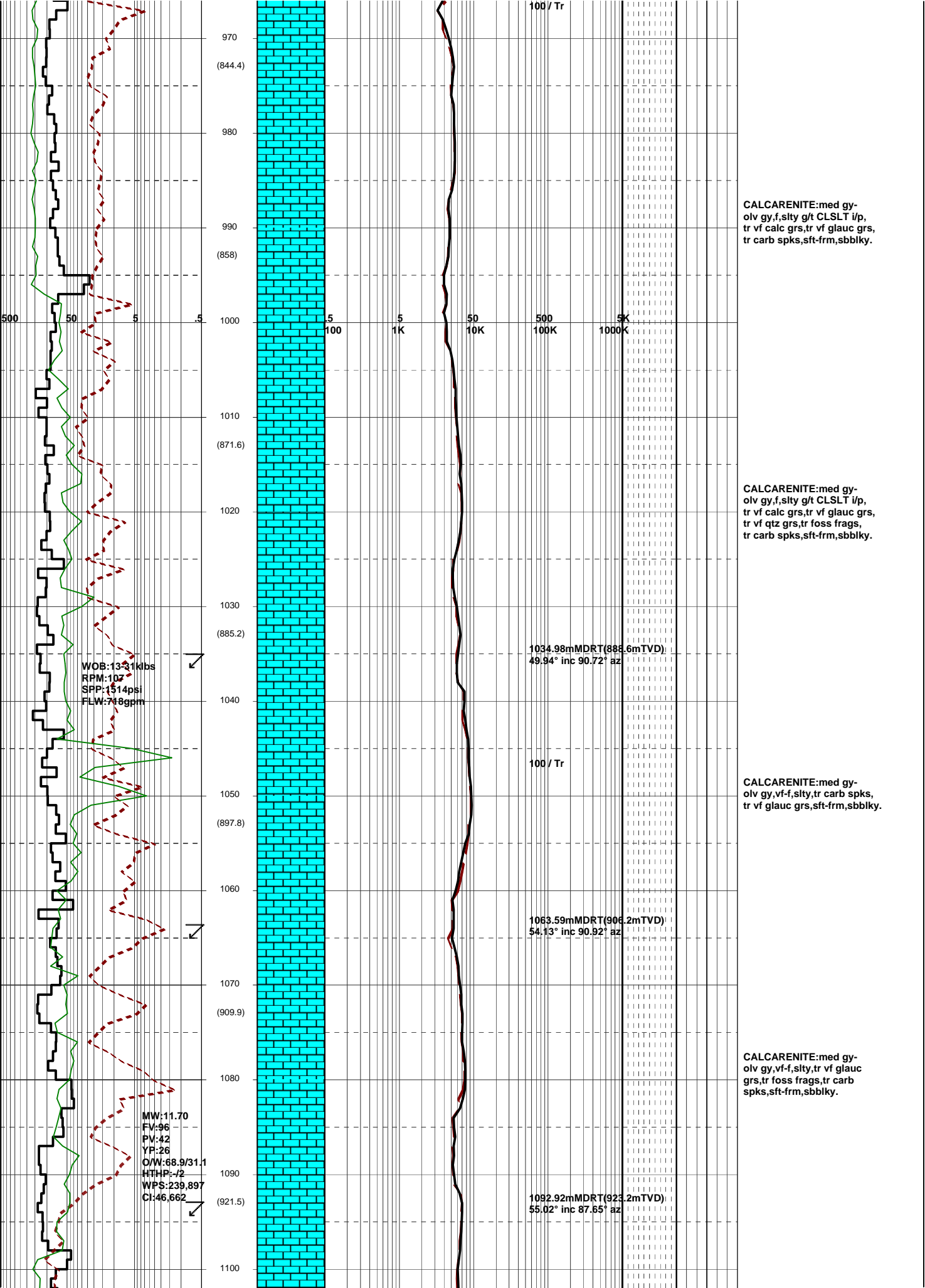
WKF W9A



GENERAL	SURFACE POSITION	HOLE / CASING INFO	DATE / DEPTH	ENGINEERS
Country : AUSTRALIA	Longitude : 148°6'20.028" E		Kick off Date: 28/12/2009	Alex Djukanovic
Permit : VIC / L7	Latitude : 38°35'34.713" S	9-7/8" Hole to	Total Depth Date :	Dan Dennis
Field : West Kingfish	MGA Co-ord X : 596280.060 mE		Total Depth:	Gareth Munro
Basin : GIPPSLAND	MGA Co-ord Y : 5727810.280 mN	13-3/8" Surface Csg at 923.0 mMDRT	True Vertical Depth:	Kepa O'Reilly
Well Type : DEVELOPMENT	RT to MSL : 41.70 m	7" Production Csg at	Log Scale : 1/ 500	Adam Sullivan
Rig Name : Nabors 175	RT to Sea Bed : 118.70 m			

ABBREVIATIONS		LITHOLOGY LEGEND				ENGINEERING LEGEND	
MW	Mud Weight	WOB	Weight on Bit (klbs)	Claystone	Marl	Bryozoa	Glauconite
FV	Funnel Viscosity	RPM	Rotations Per Min	Siltstone	Limestone	Radiolariae	Pyrite
PV	Plastic Viscosity	FLW	Flow Rate (gpm)	Sandstone	Dolomite	Echinoids	
YP	Yield Point	SPP	Pump Pressure (psi)	Shale	Coal-lignite	Foraminiferae	
O/W	Oil/Water Ratio	RR	Re-Run Bit	Conglomerate	Volcanics	Cement	
WPS	Aq. Phase Salinity	TG	Trip Gas				
HPHT	Fluid Loss	CG	Connection Gas				
CI	Chlorides	BG	Background Gas				
Incl	Inclination	DGP	Drilled Gas Peak				
Az	Azimuth	MM	Mud Motor				





970
(844.4)
980
990
(858)
1000
1010
(871.6)
1020
1030
(885.2)
1040
1050
(897.8)
1060
1070
(909.9)
1080
1090
(921.5)
1100

500 50 5 .5

.5 5 50 500 5K
100 1K 10K 100K 1000K

CALCARENITE: med gy-olv gy, f, stly g/t CLSLT i/p, tr vf calc grs, tr vf glauc grs, tr carb spks, sft-frm, sbbiky.

CALCARENITE: med gy-olv gy, f, stly g/t CLSLT i/p, tr vf calc grs, tr vf glauc grs, tr vf qtz grs, tr foss frags, tr carb spks, sft-frm, sbbiky.

CALCARENITE: med gy-olv gy, vf-f, stly, tr carb spks, tr vf glauc grs, sft-frm, sbbiky.

CALCARENITE: med gy-olv gy, vf-f, stly, tr vf glauc grs, tr foss frags, tr carb spks, sft-frm, sbbiky.

WOB: 13-31 kbs
RPM: 102
SPP: 1514 psi
FLW: 748 gpm

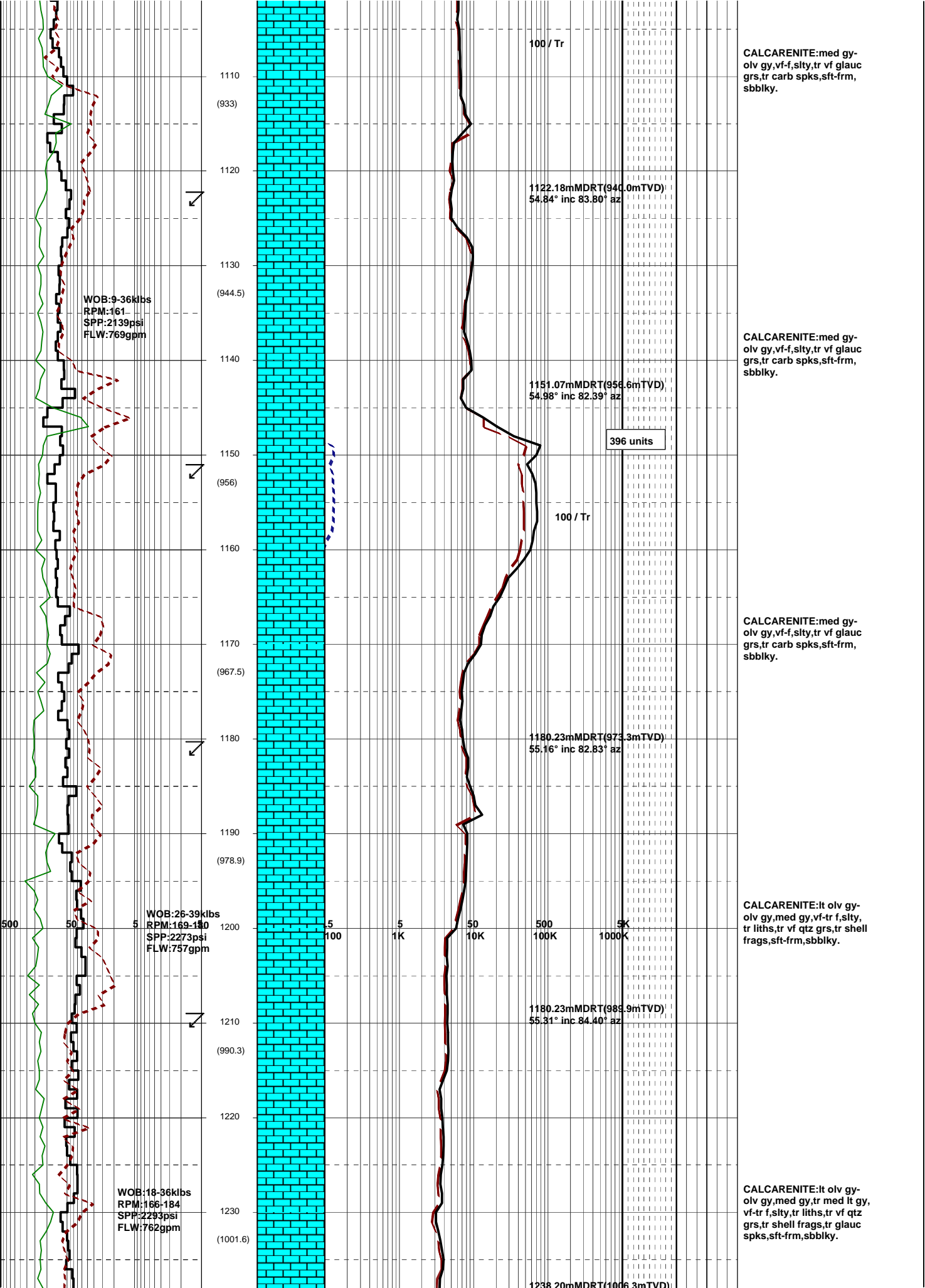
1034.98m MDRT (888.6m TVD)
49.94° inc 90.72° az

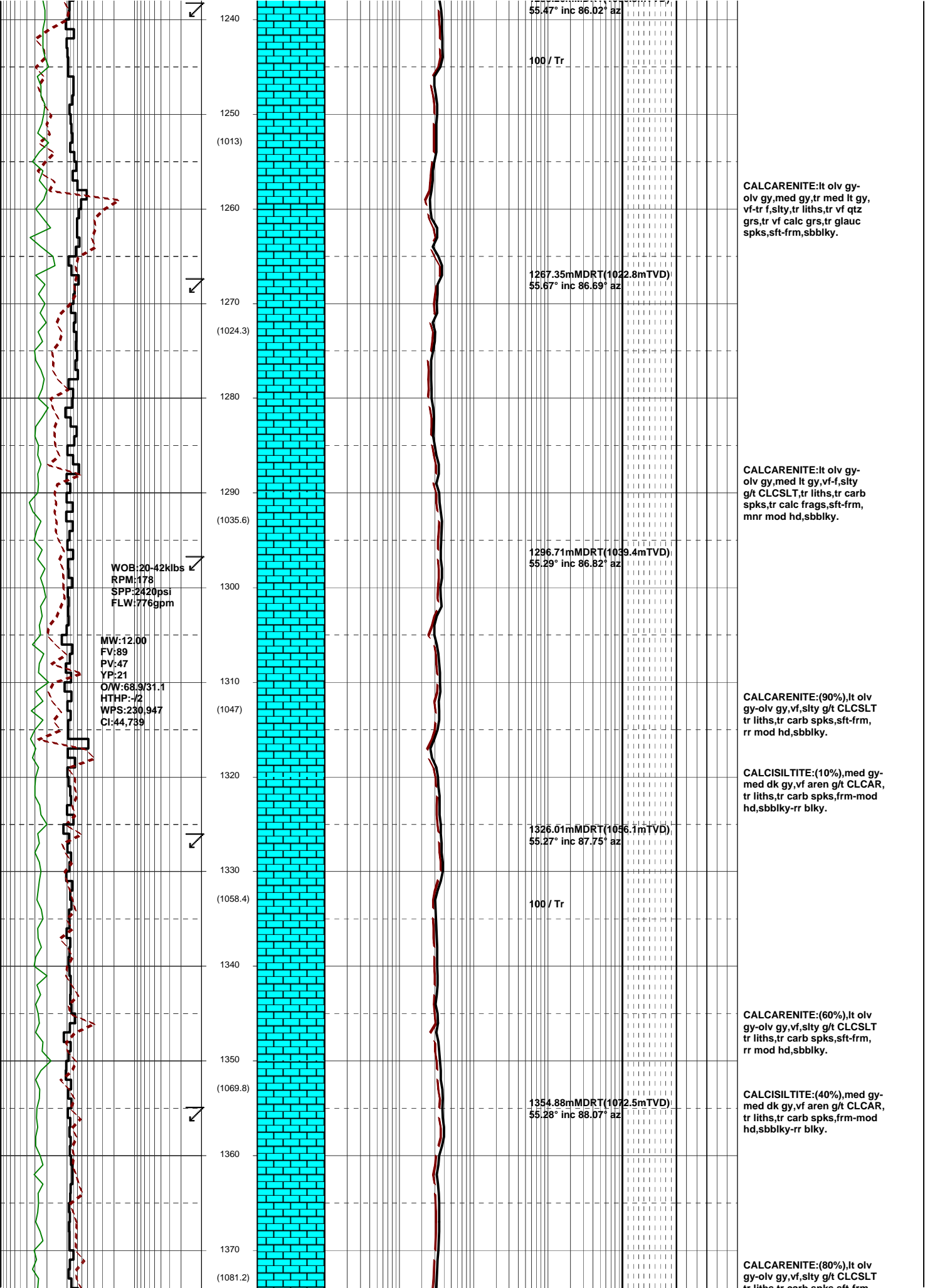
100 / Tr

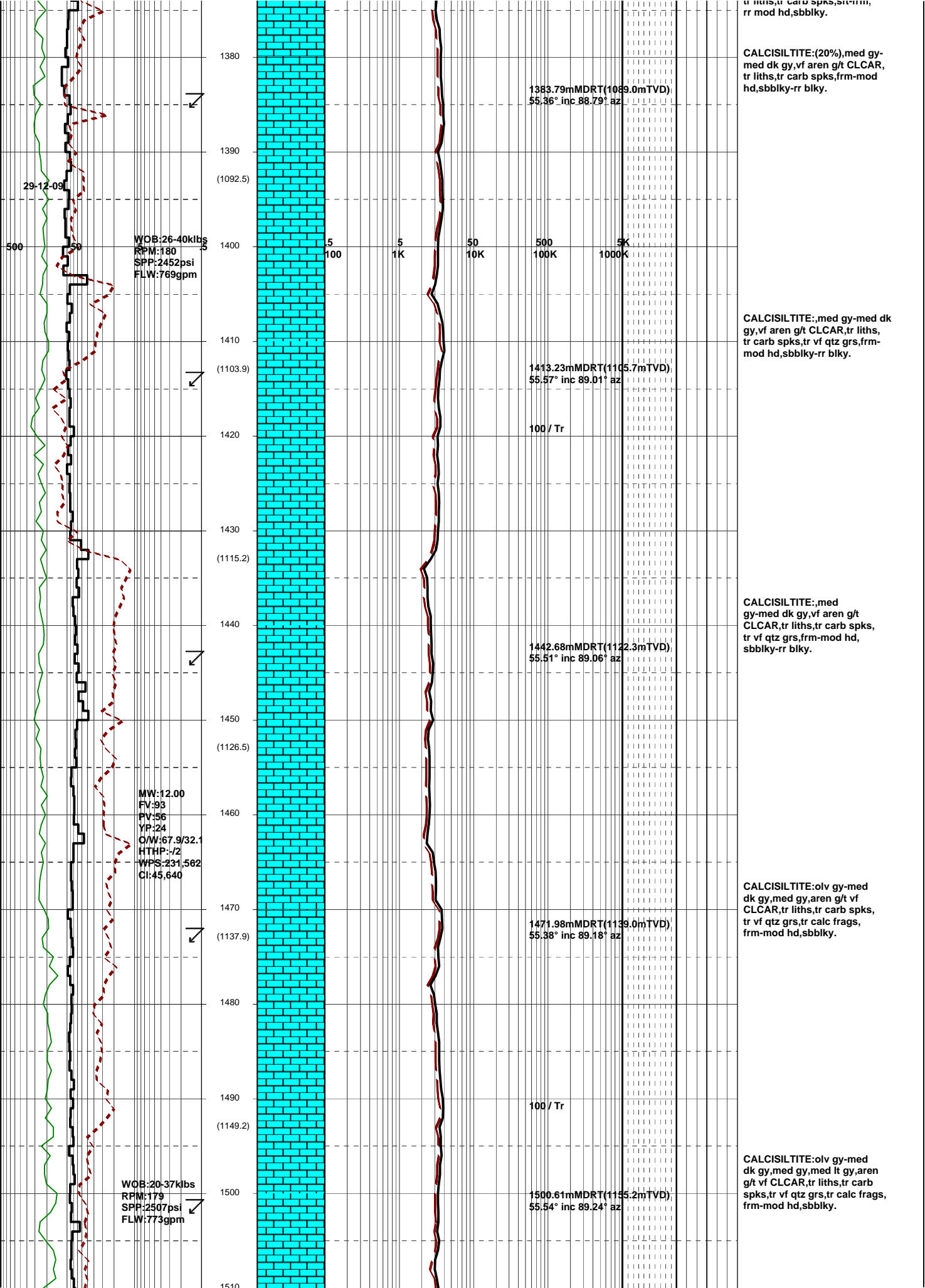
1063.59m MDRT (906.2m TVD)
54.13° inc 90.92° az

MW: 11.70
FV: 96
PV: 42
YP: 26
O/W: 68.9/31.1
HTHP: /2
WPS: 239,897
CI: 46,662

1092.92m MDRT (923.2m TVD)
55.02° inc 87.65° az







29-12-09

WOB:26-40klbs
RPM:180
SPP:2452psi
FLW:769gpm

MW:12.00
FV:93
PV:56
YP:24
O/W:67.9/32.1
HTHP:-/2
WPS:231,562
CI:45,640

WOB:20-37klbs
RPM:179
SPP:2507psi
FLW:773gpm

1380
1390
(1092.5)
1400
1410
(1103.9)
1420
1430
(1115.2)
1440
1450
(1126.5)
1460
1470
(1137.9)
1480
1490
(1149.2)
1500
1510

1383.79mMDRT(1089.0mTVD),
55.36° inc 88.79° az

1413.23mMDRT(1105.7mTVD),
55.57° inc 89.01° az

1442.68mMDRT(1122.3mTVD),
55.51° inc 89.06° az

1471.98mMDRT(1139.0mTVD),
55.38° inc 89.18° az

1500.61mMDRT(1155.2mTVD),
55.54° inc 89.24° az

5 5 50 500 5K
100 1K 10K 100K 1000K

100 / Tr

100 / Tr

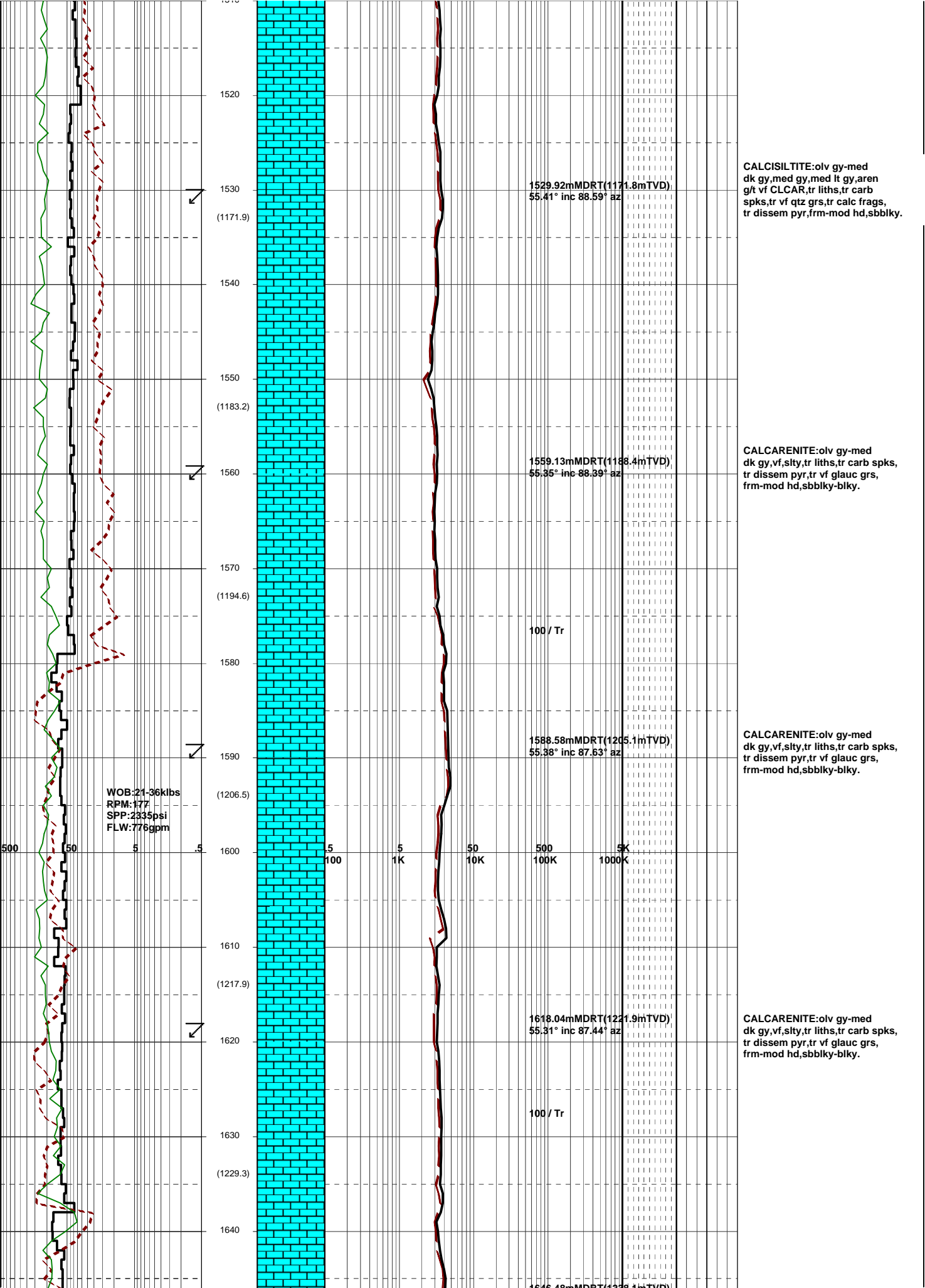
CALCISILTITE:(20%),med gy-med dk gy,vf aren g/t CLCAR, tr liths, tr carb spks, frm-mod hd, sbbiky-rr blkly.

CALCISILTITE:,med gy-med dk gy,vf aren g/t CLCAR, tr liths, tr carb spks, tr vf qtz grs, frm-mod hd, sbbiky-rr blkly.

CALCISILTITE:,med gy-med dk gy,vf aren g/t CLCAR, tr liths, tr carb spks, tr vf qtz grs, frm-mod hd, sbbiky-rr blkly.

CALCISILTITE:olv gy-med dk gy, med gy, aren g/t vf CLCAR, tr liths, tr carb spks, tr vf qtz grs, tr calc frags, frm-mod hd, sbbiky.

CALCISILTITE:olv gy-med dk gy, med gy, med lt gy, aren g/t vf CLCAR, tr liths, tr carb spks, tr vf qtz grs, tr calc frags, frm-mod hd, sbbiky.



MW:11.95
FV:96
PV:50
YP:26
O/W:67.9/32.1
HTHP:1/2
WPS:226,933
CI:44,554

WOB:26.41klbs
RPM:180
SPP:2402psi
FLW:769gpm

1650
(1240.6)
1660
1670
(1252)
1680
1690
(1263.3)
1700
1710
(1274.6)
1720
1730
(1285.9)
1740
1750
(1297.2)
1760
1770
(1308.5)
1780

1666.40mMDRT(1236.1mTVD),
55.46° inc 87.39° az

1675.99mMDRT(1254.8mTVD),
55.50° inc 87.48° az

100 / Tr

1705.17mMDRT(1271.3mTVD),
55.64° inc 87.54° az

1734.54mMDRT(1287.9mTVD),
55.60° inc 87.54° az

100 / Tr

1763.61mMDRT(1304.3mTVD),
55.56° inc 87.08° az

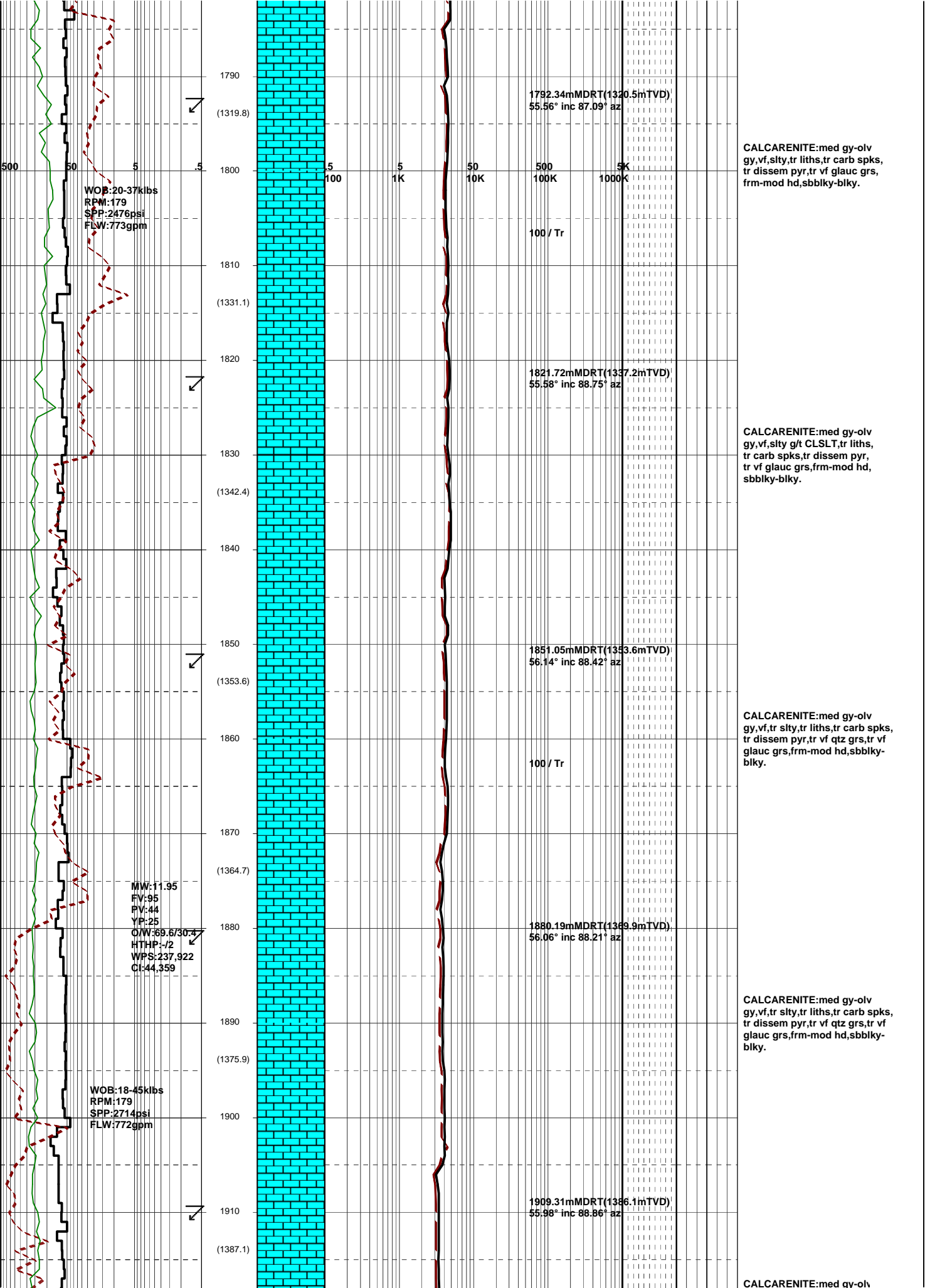
CALCARENITE:olv gy-med
dk gy,vf,sity,tr liths,tr carb spks,
tr vf glauc grs,sft frm,
sbbiky-blky.

CALCARENITE:olv gy-med
dk gy,vf,sity,tr liths,tr carb spks,
tr dissem pyr,tr vf glauc grs,
sft frm,sbbiky-blky.

CALCARENITE:olv gy-med
dk gy,vf,sity,tr liths,tr carb spks,
tr dissem pyr,tr vf glauc grs,
frm-mod hd,sbbiky-blky.

CALCARENITE:med gy-olv
gy,vf,sity,tr liths,tr carb spks,
tr dissem pyr,tr vf glauc grs,
frm-mod hd,sbbiky-blky.

CALCARENITE:med gy-olv
gy,vf,sity,tr liths,tr carb spks,
tr dissem pyr,tr vf glauc grs,
frm-mod hd,sbbiky-blky.



1790
(1319.8)
1800
(1331.1)
1810
(1342.4)
1820
(1353.6)
1830
(1364.7)
1840
(1375.9)
1850
(1387.1)

1792.34mMDRT(1320.5mTVD)
55.56° inc 87.09° az

100 / Tr

1821.72mMDRT(1337.2mTVD)
55.58° inc 88.75° az

1851.05mMDRT(1353.6mTVD)
56.14° inc 88.42° az

100 / Tr

1880.19mMDRT(1369.9mTVD)
56.06° inc 88.21° az

1909.31mMDRT(1386.1mTVD)
55.98° inc 88.86° az

CALCARENITE:med gy-olv
gy,vf,silty,tr liths,tr carb spks,
tr dissem pyr,tr vf glauc grs,
frm-mod hd,sbbkly-blky.

CALCARENITE:med gy-olv
gy,vf,silty g/t CLSLT,tr liths,
tr carb spks,tr dissem pyr,
tr vf glauc grs,frm-mod hd,
sbbkly-blky.

CALCARENITE:med gy-olv
gy,vf,tr silty,tr liths,tr carb spks,
tr dissem pyr,tr vf qtz grs,tr vf
glauc grs,frm-mod hd,sbbkly-
blky.

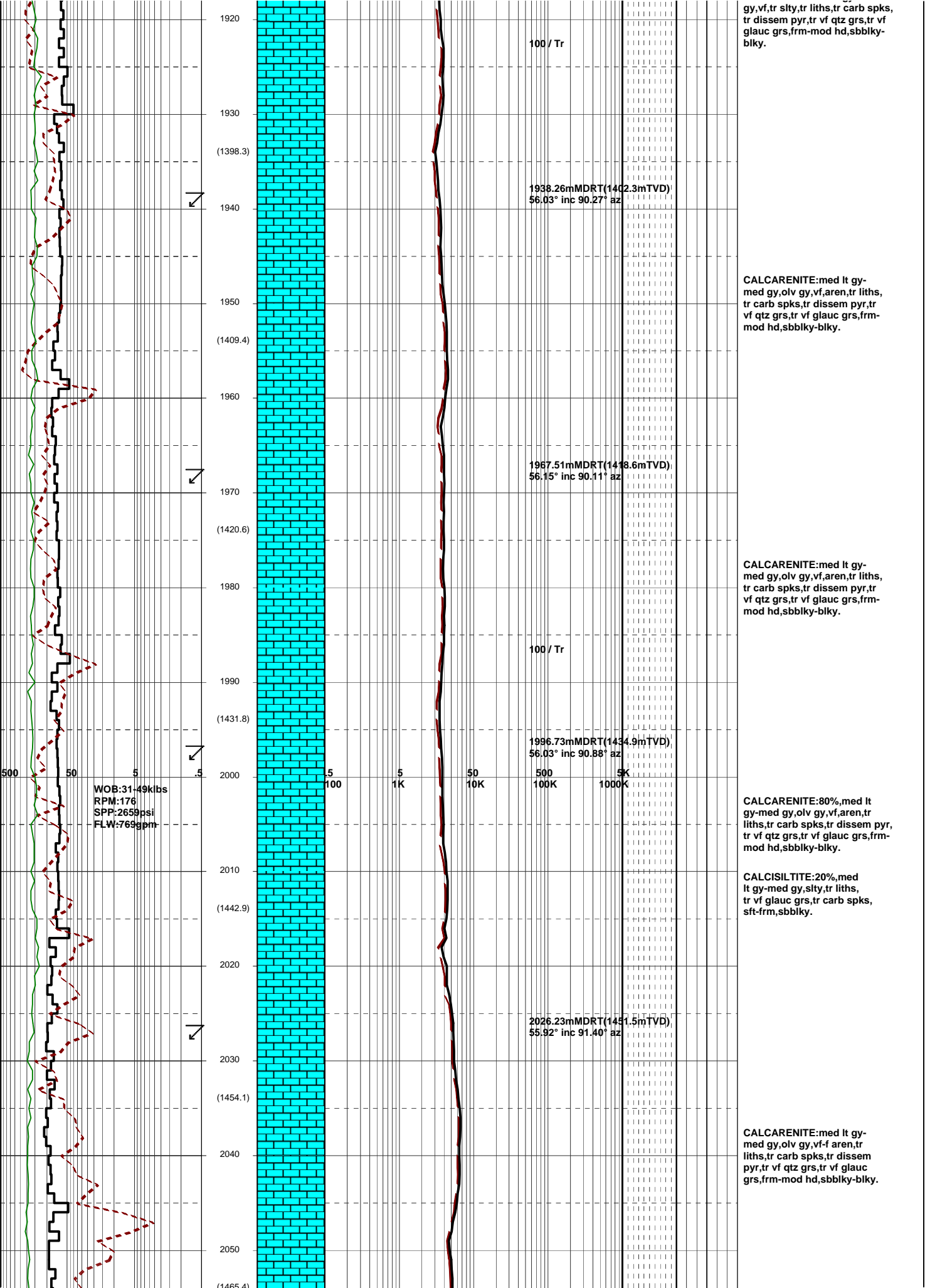
CALCARENITE:med gy-olv
gy,vf,tr silty,tr liths,tr carb spks,
tr dissem pyr,tr vf qtz grs,tr vf
glauc grs,frm-mod hd,sbbkly-
blky.

CALCARENITE:med gy-olv

WOB:20-37klbs
RPM:179
SPP:2476psi
FLW:773gpm

MW:11.95
FV:95
PV:44
YP:25
O/W:69.6/30.4
HTHP:-/2
WPS:237,922
CI:44,359

WOB:18-45klbs
RPM:179
SPP:2714psi
FLW:772gpm



1920
1930
(1398.3)
1940
1950
(1409.4)
1960
1970
(1420.6)
1980
1990
(1431.8)
2000
2010
(1442.9)
2020
2030
(1454.1)
2040
2050
(1465.4)

100 / Tr

1938.26mMDRT(1402.3mTVD),
56.03° inc 90.27° az

1967.51mMDRT(1418.6mTVD),
56.15° inc 90.11° az

100 / Tr

1996.73mMDRT(1434.9mTVD),
56.03° inc 90.88° az

2026.23mMDRT(1451.5mTVD),
55.92° inc 91.40° az

gy,vf,tr slty,tr liths,tr carb spks,
tr dissem pyr,tr vf qtz grs,tr vf
glauc grs,frm-mod hd,sbblky-
blky.

CALCARENITE:med lt gy-
med gy,olv gy,vf,aren,tr liths,
tr carb spks,tr dissem pyr,tr
vf qtz grs,tr vf glauc grs,frm-
mod hd,sbblky-blky.

CALCARENITE:med lt gy-
med gy,olv gy,vf,aren,tr liths,
tr carb spks,tr dissem pyr,tr
vf qtz grs,tr vf glauc grs,frm-
mod hd,sbblky-blky.

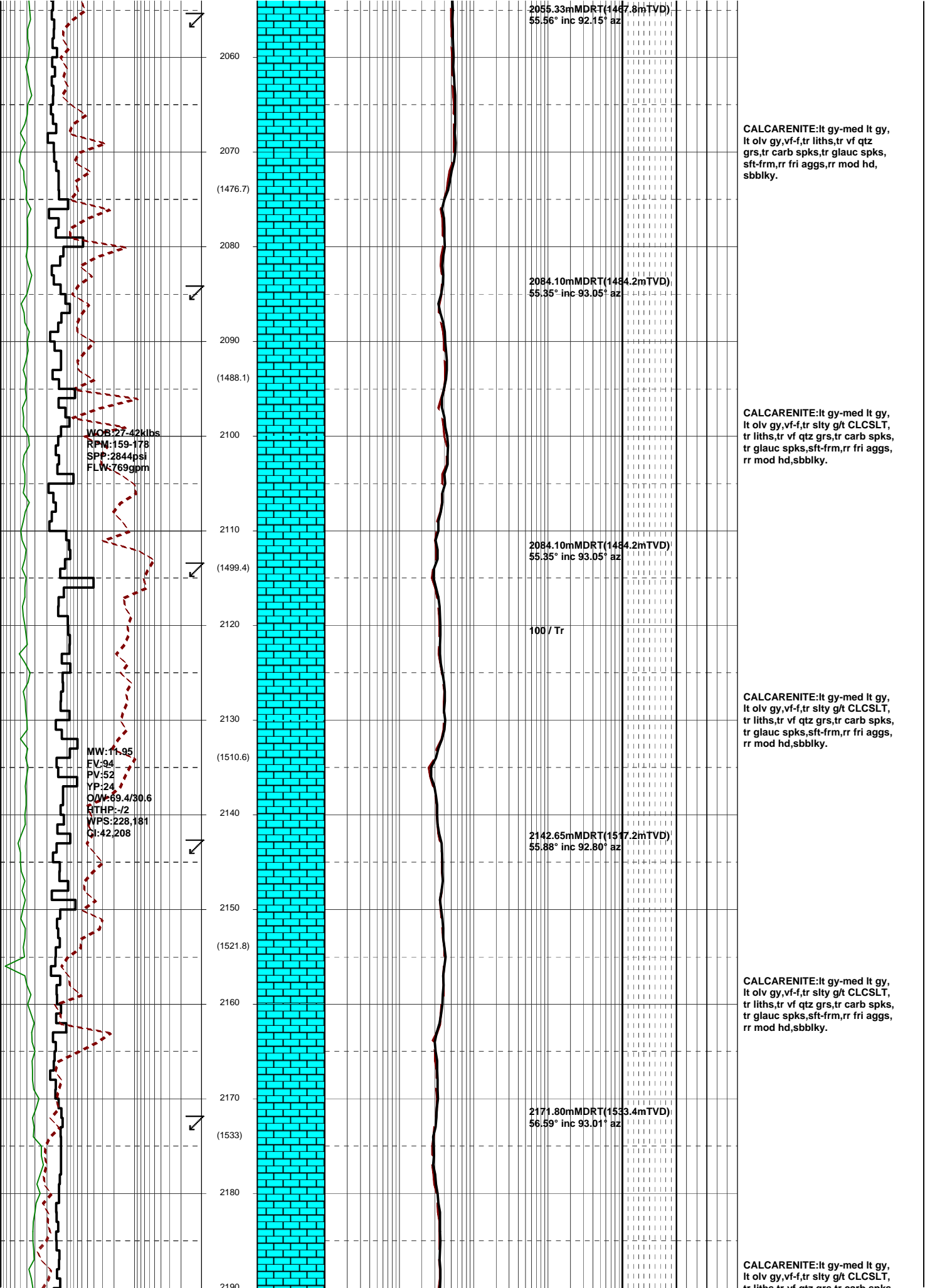
CALCARENITE:80%,med lt
gy-med gy,olv gy,vf,aren,tr
liths,tr carb spks,tr dissem pyr,
tr vf qtz grs,tr vf glauc grs,frm-
mod hd,sbblky-blky.

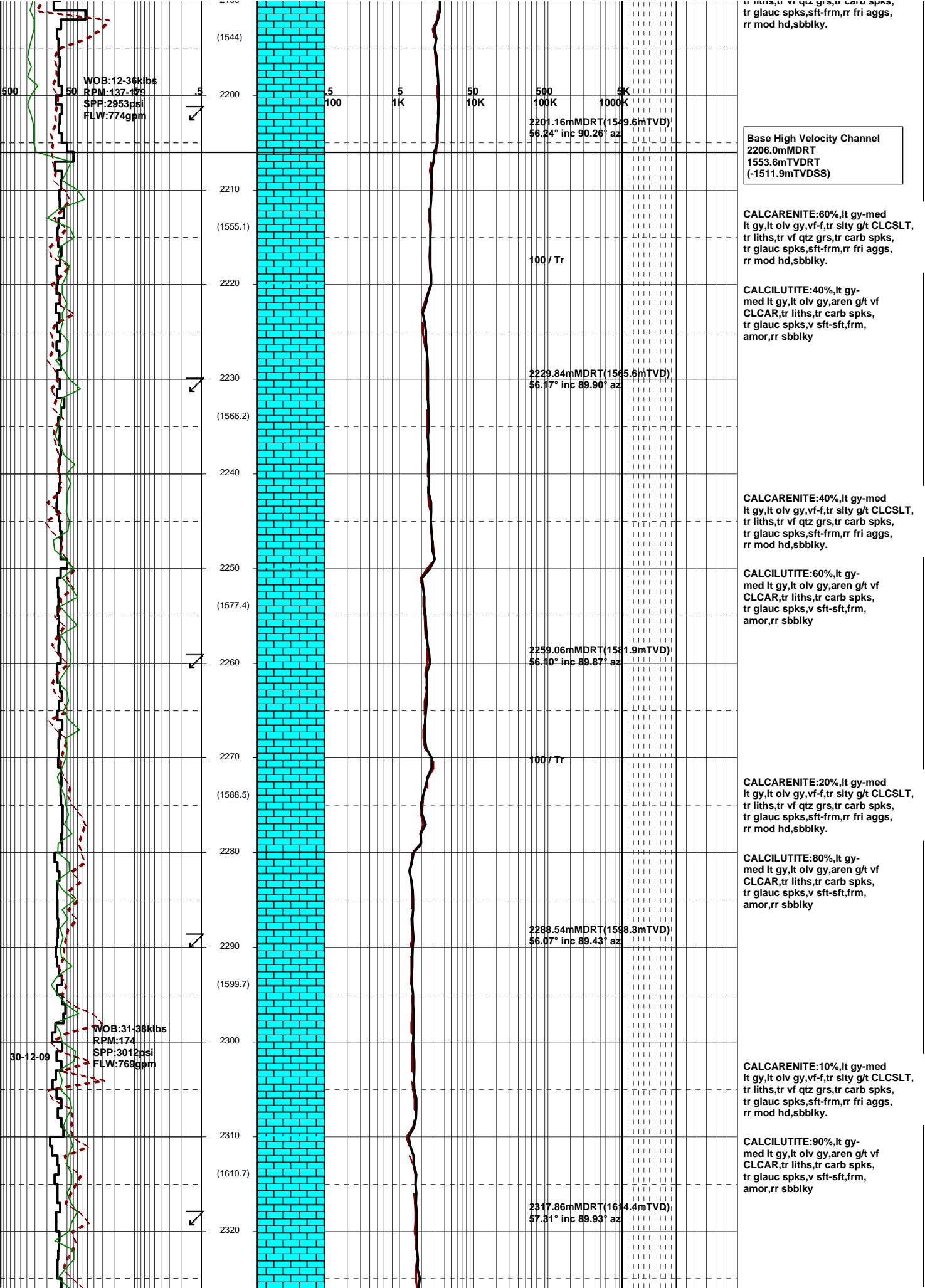
CALCISILTITE:20%,med
lt gy-med gy,slty,tr liths,
tr vf glauc grs,tr carb spks,
sft-frm,sbblky.

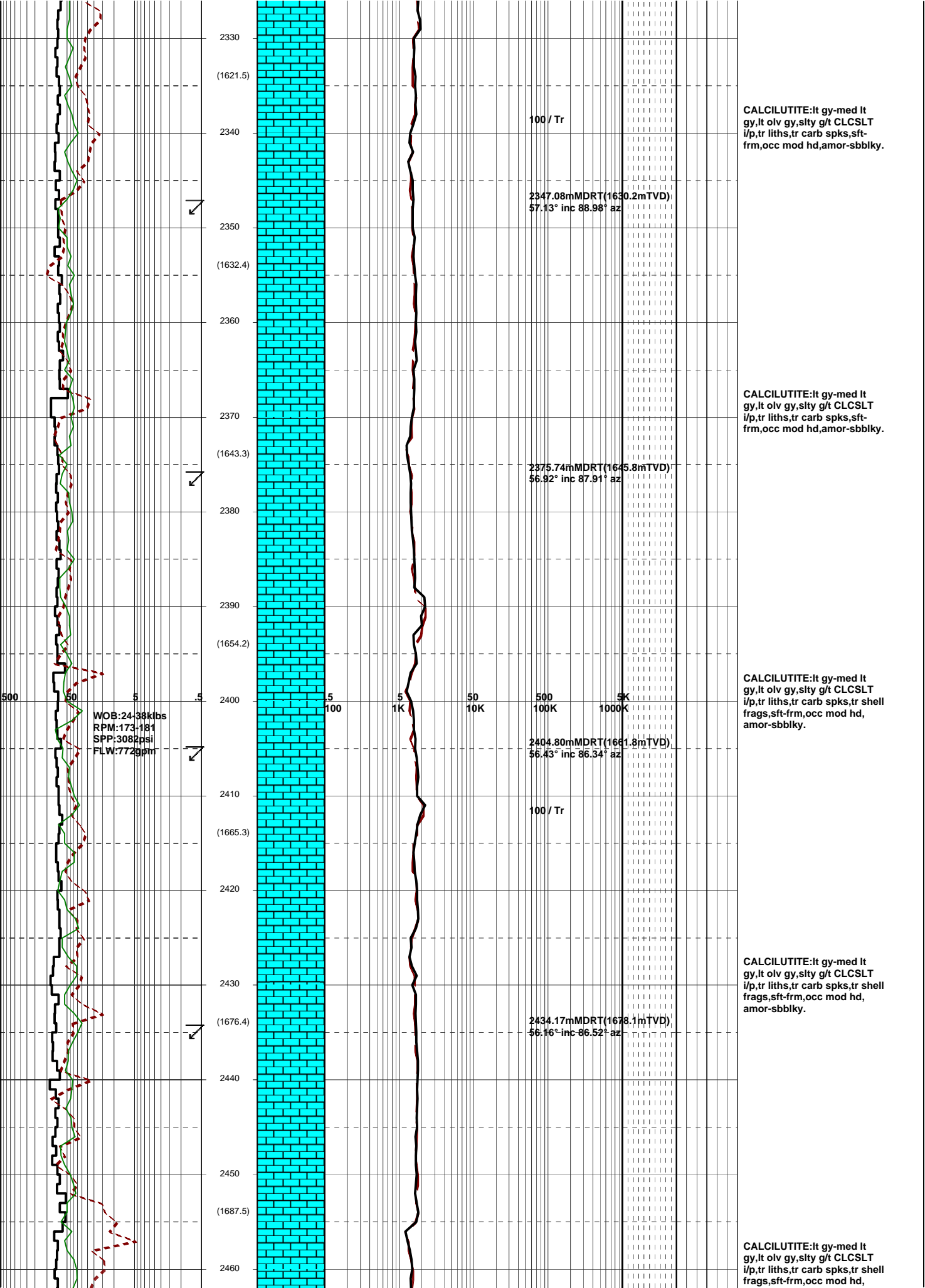
CALCARENITE:med lt gy-
med gy,olv gy,vf-f aren,tr
liths,tr carb spks,tr dissem
pyr,tr vf qtz grs,tr vf glauc
grs,frm-mod hd,sbblky-blky.

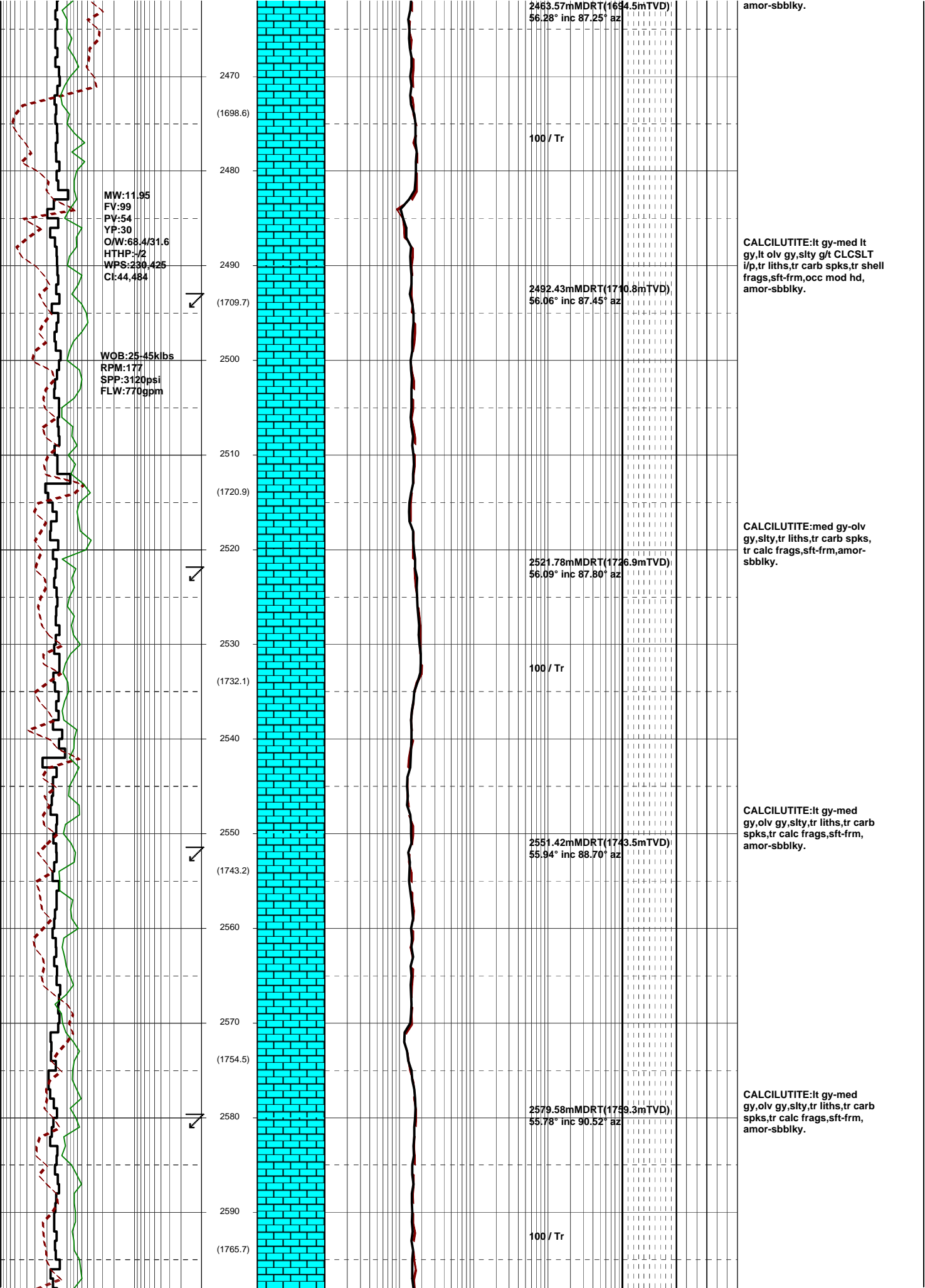
WOB:31.49kibs
RPM:176
SPP:2659psi
FLW:769gpm

500 50 5 .5
100 1K 50 10K 500 1000K









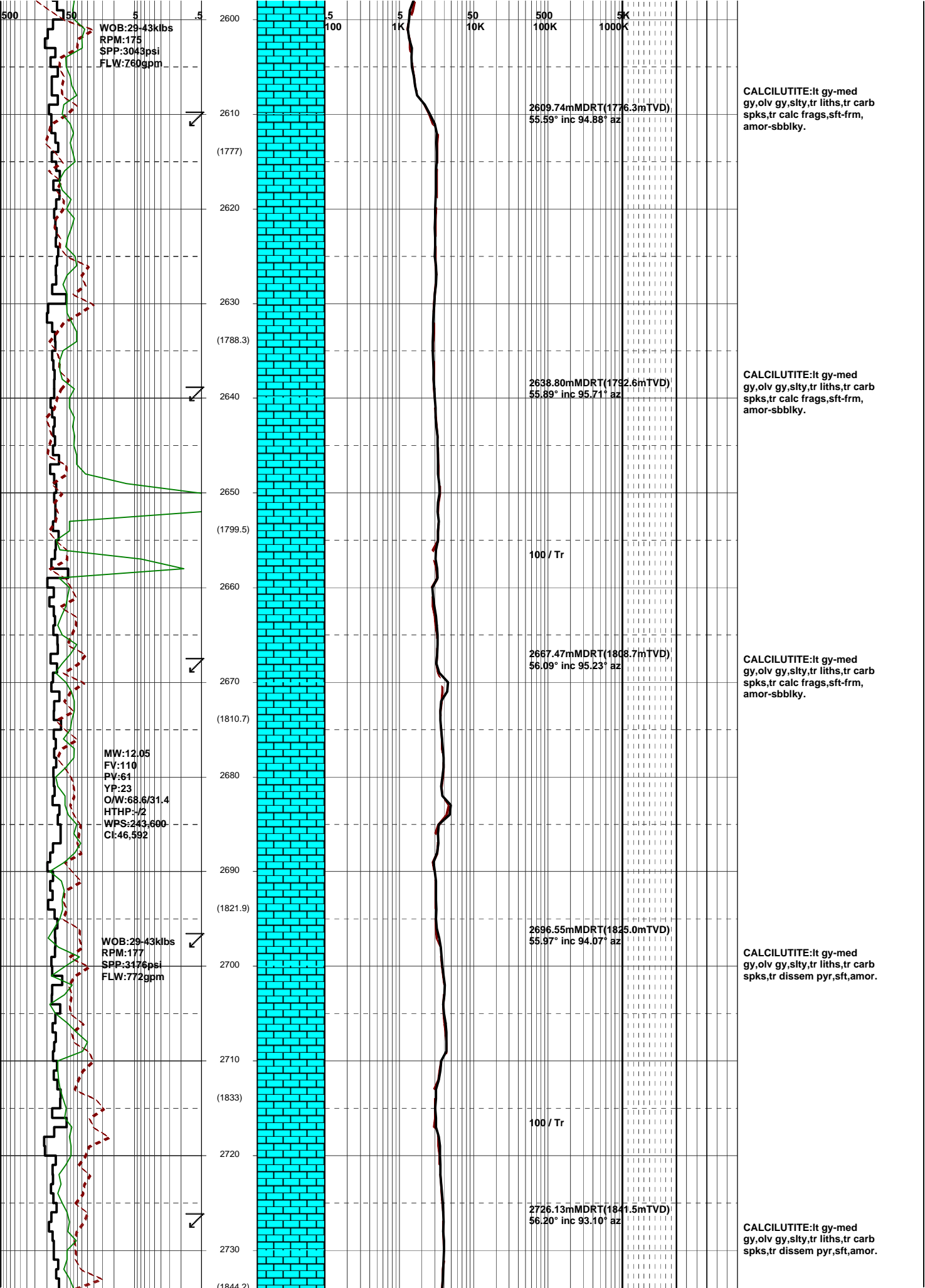
MW:11.95
 FV:99
 PV:54
 YP:30
 O/W:68.4/31.6
 HTHP:-/2
 WPS:230,425
 Ct:44,484

WOB:25-45klbs
 RPM:177
 SPP:3120psi
 FLW:770gpm

2470
 (1698.6)
 2480
 2490
 (1709.7)
 2500
 2510
 (1720.9)
 2520
 2530
 (1732.1)
 2540
 2550
 (1743.2)
 2560
 2570
 (1754.5)
 2580
 2590
 (1765.7)

2463.57mMDRT(1694.5mTVD),
 56.28° inc 87.25° az
 100 / Tr
 2492.43mMDRT(1710.8mTVD),
 56.06° inc 87.45° az
 2521.78mMDRT(1726.9mTVD),
 56.09° inc 87.80° az
 100 / Tr
 2551.42mMDRT(1743.5mTVD),
 55.94° inc 88.70° az
 2579.58mMDRT(1759.3mTVD),
 55.78° inc 90.52° az
 100 / Tr

amor-sbbiky.
 CALCILUTITE:lt gy-med lt gy,lt olv gy,silty g/t CLCSLT i/p,tr liths,tr carb spks,tr shell frags,sft frm,occ mod hd, amor-sbbiky.
 CALCILUTITE:med gy-olv gy,silty,tr liths,tr carb spks, tr calc frags,sft frm,amor-sbbiky.
 CALCILUTITE:lt gy-med gy,olv gy,silty,tr liths,tr carb spks,tr calc frags,sft frm, amor-sbbiky.
 CALCILUTITE:lt gy-med gy,olv gy,silty,tr liths,tr carb spks,tr calc frags,sft frm, amor-sbbiky.



WOB:29-43klbs
RPM:175
SPP:3043psi
FLW:760gpm

MW:12.05
FV:110
PV:61
YP:23
O/W:68.6/31.4
HTHP:-/2
WPS:243-600
Cl:46,592

WOB:29-43klbs
RPM:177
SPP:3176psi
FLW:772gpm

2609.74mMDRT(1776.3mTVD),
55.59° inc 94.88° az

2638.80mMDRT(1792.6mTVD),
55.89° inc 95.71° az

100 / Tr

2667.47mMDRT(1808.7mTVD),
56.09° inc 95.23° az

2696.55mMDRT(1825.0mTVD),
55.97° inc 94.07° az

100 / Tr

2726.13mMDRT(1841.5mTVD),
56.20° inc 93.10° az

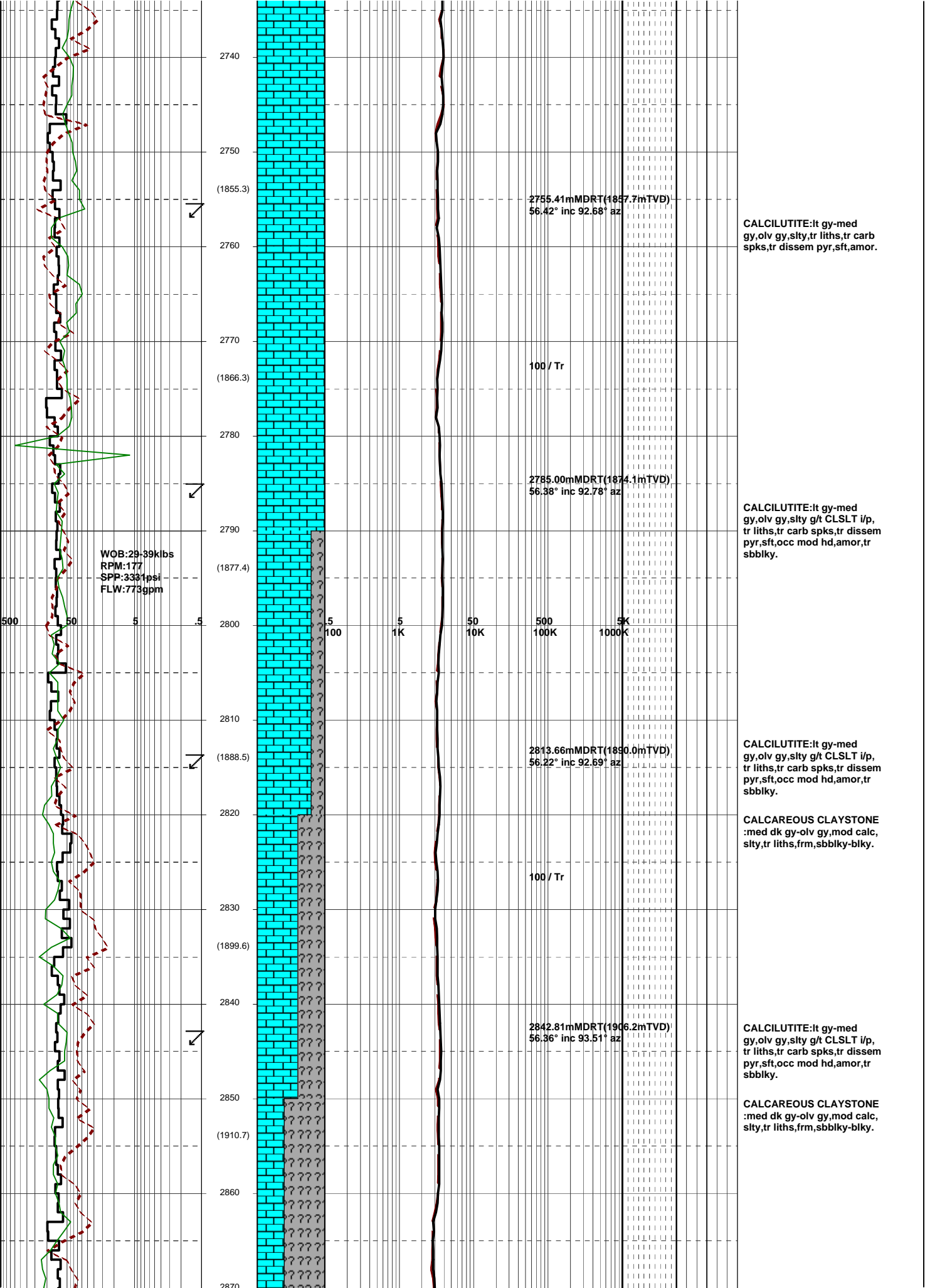
CALCILUTITE:lt gy-med
gy,olv gy,silty,tr liths,tr carb
spks,tr calc frags,sft frm,
amor-sbblky.

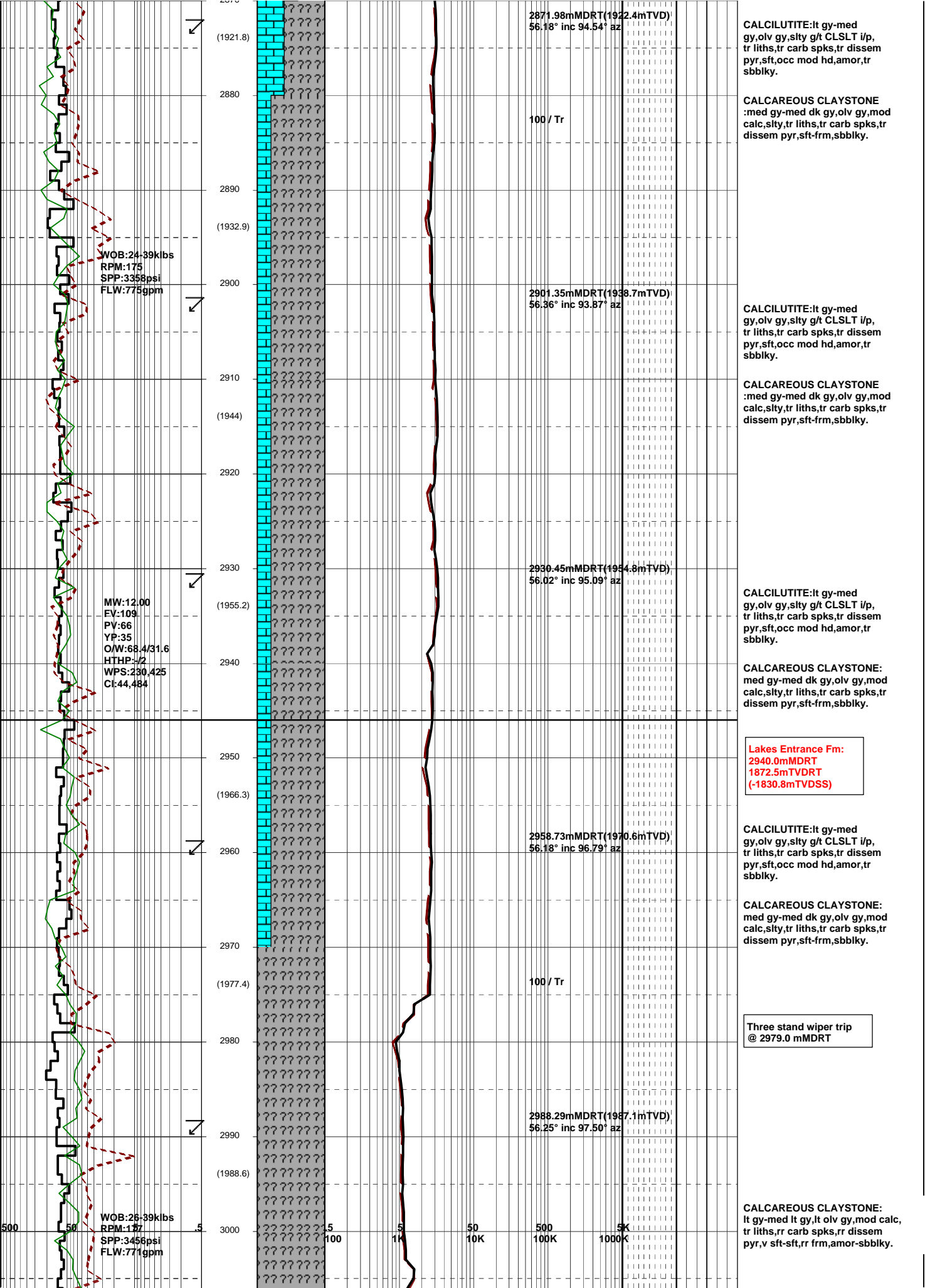
CALCILUTITE:lt gy-med
gy,olv gy,silty,tr liths,tr carb
spks,tr calc frags,sft frm,
amor-sbblky.

CALCILUTITE:lt gy-med
gy,olv gy,silty,tr liths,tr carb
spks,tr calc frags,sft frm,
amor-sbblky.

CALCILUTITE:lt gy-med
gy,olv gy,silty,tr liths,tr carb
spks,tr dissem pyr,sft,amor.

CALCILUTITE:lt gy-med
gy,olv gy,silty,tr liths,tr carb
spks,tr dissem pyr,sft,amor.





(1921.8)
2880
(1932.9)
2900
2910
(1944)
2920
2930
(1955.2)
2940
2950
(1966.3)
2960
2970
(1977.4)
2980
2990
(1988.6)
3000

2871.98mMDRT(1922.4mTVD)
56.18° inc 94.54° az

100 / Tr

2901.35mMDRT(1938.7mTVD)
56.36° inc 93.87° az

2930.45mMDRT(1954.8mTVD)
56.02° inc 95.09° az

2958.73mMDRT(1970.6mTVD)
56.18° inc 96.79° az

2988.29mMDRT(1987.1mTVD)
56.25° inc 97.50° az

CALCILUTITE:lt gy-med gy,olv gy,sity g/t CLSLT i/p, tr liths,tr carb spks,tr dissem pyr,sft,occ mod hd,amor,tr sbbiky.

CALCAREOUS CLAYSTONE: med gy-med dk gy,olv gy,mod calc,sity,tr liths,tr carb spks,tr dissem pyr,sft-frm,sbbiky.

CALCILUTITE:lt gy-med gy,olv gy,sity g/t CLSLT i/p, tr liths,tr carb spks,tr dissem pyr,sft,occ mod hd,amor,tr sbbiky.

CALCAREOUS CLAYSTONE: med gy-med dk gy,olv gy,mod calc,sity,tr liths,tr carb spks,tr dissem pyr,sft-frm,sbbiky.

CALCILUTITE:lt gy-med gy,olv gy,sity g/t CLSLT i/p, tr liths,tr carb spks,tr dissem pyr,sft,occ mod hd,amor,tr sbbiky.

CALCAREOUS CLAYSTONE: med gy-med dk gy,olv gy,mod calc,sity,tr liths,tr carb spks,tr dissem pyr,sft-frm,sbbiky.

Lakes Entrance Fm:
2940.0mMDRT
1872.5mTVDRT
(-1830.8mTVDSS)

CALCILUTITE:lt gy-med gy,olv gy,sity g/t CLSLT i/p, tr liths,tr carb spks,tr dissem pyr,sft,occ mod hd,amor,tr sbbiky.

CALCAREOUS CLAYSTONE: med gy-med dk gy,olv gy,mod calc,sity,tr liths,tr carb spks,tr dissem pyr,sft-frm,sbbiky.

Three stand wiper trip @ 2979.0 mMDRT

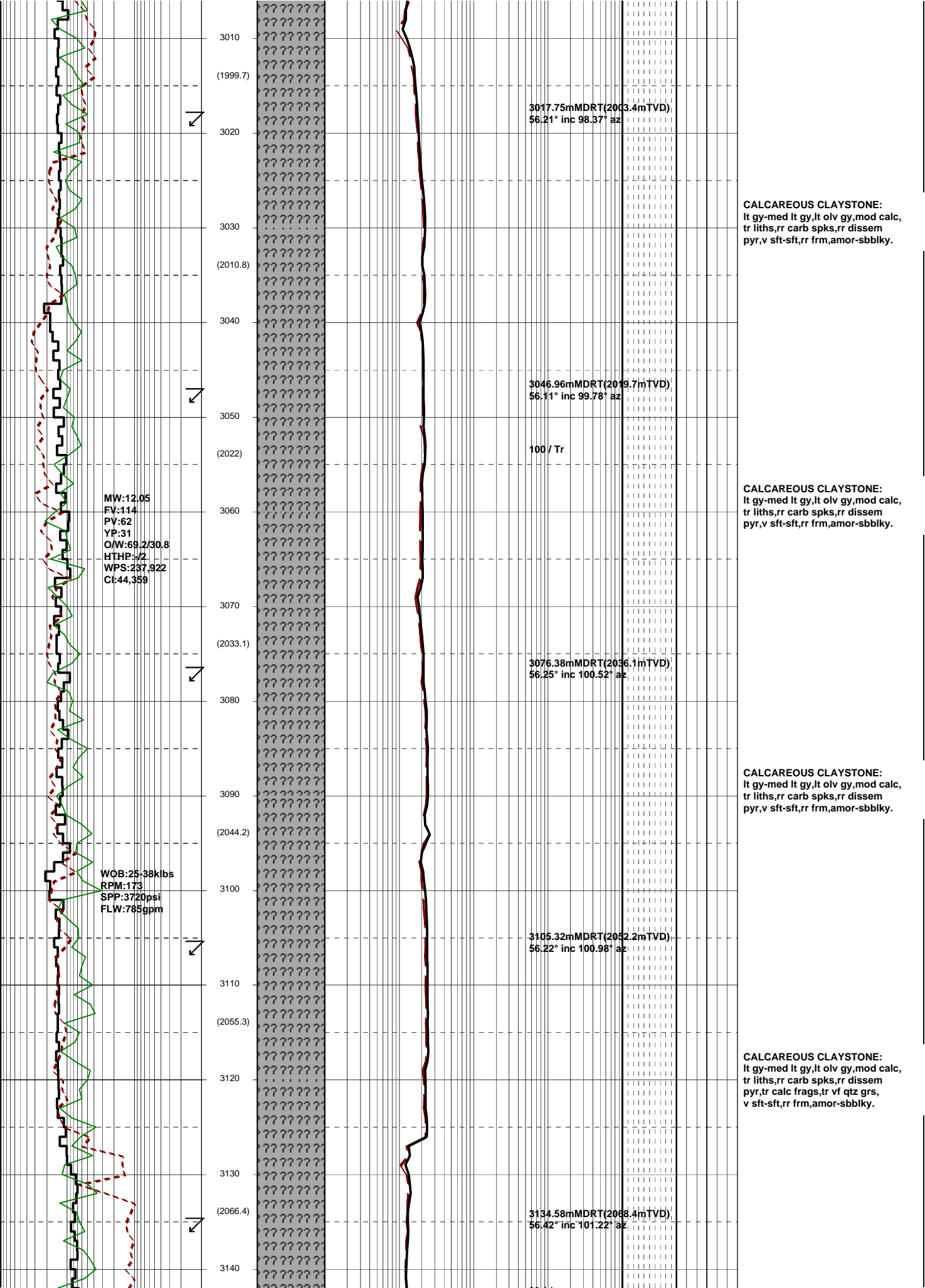
CALCAREOUS CLAYSTONE: lt gy-med lt gy,lt olv gy,mod calc, tr liths,rr carb spks,rr dissem pyr,v sft-sft,rr frm,amor-sbbiky.

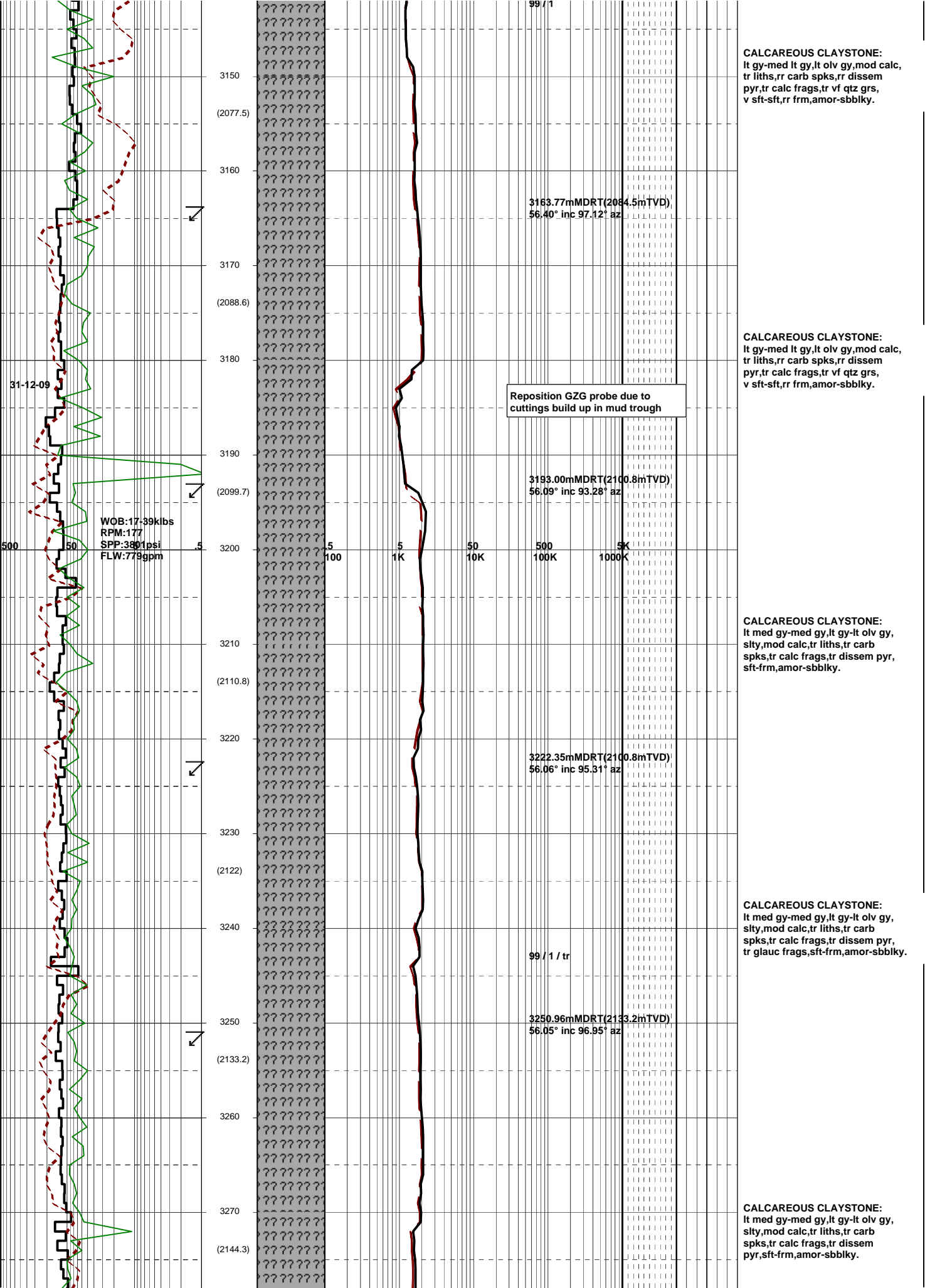
WOB:24-39klbs
RPM:175
SPP:3358psi
FLW:775gpm

MW:12.00
EV:109
PV:66
YP:35
OW:68.4/31.6
HTHP:-/2
WPS:230.425
CL:44,484

WOB:26-39klbs
RPM:177
SPP:3456psi
FLW:771gpm

500 50 5 50 500 5K
100 1K 10K 100K 1000K





99 / 1

CALCAREOUS CLAYSTONE:
 lt gy-med lt gy,lt olv gy,mod calc,
 tr liths,rr carb spks,rr dissem
 pyr,tr calc frags,tr vf qtz grs,
 v sft-sft,rr frm,amor-sbbkly.

3150
(2077.5)
3160
3170
(2088.6)
3180
3190
(2099.7)
3200
3210
(2110.8)
3220
3230
(2122)
3240
3250
(2133.2)
3260
3270
(2144.3)

3163.77mMDRT(2084.5mTVD),
56.40° inc 97.12° az

Reposition GZG probe due to
cuttings build up in mud trough

3193.00mMDRT(2100.8mTVD),
56.09° inc 93.28° az

CALCAREOUS CLAYSTONE:
 lt gy-med lt gy,lt olv gy,mod calc,
 tr liths,rr carb spks,rr dissem
 pyr,tr calc frags,tr vf qtz grs,
 v sft-sft,rr frm,amor-sbbkly.

CALCAREOUS CLAYSTONE:
 lt med gy-med gy,lt gy-it olv gy,
 slty,mod calc,tr liths,tr carb
 spks,tr calc frags,tr dissem pyr,
 sft-frm,amor-sbbkly.

3222.35mMDRT(2100.8mTVD),
56.06° inc 95.31° az

CALCAREOUS CLAYSTONE:
 lt med gy-med gy,lt gy-it olv gy,
 slty,mod calc,tr liths,tr carb
 spks,tr calc frags,tr dissem pyr,
 tr glauc frags,sft-frm,amor-sbbkly.

99 / 1 / tr

3250.96mMDRT(2133.2mTVD),
56.05° inc 96.95° az

CALCAREOUS CLAYSTONE:
 lt med gy-med gy,lt gy-it olv gy,
 slty,mod calc,tr liths,tr carb
 spks,tr calc frags,tr dissem pyr,
 sft-frm,amor-sbbkly.

31-12-09

WOB:17-39klbs
RPM:177
SPP:3801psi
FLW:779gpm

5 5 50 500 5K
100 1K 10K 100K 1000K

